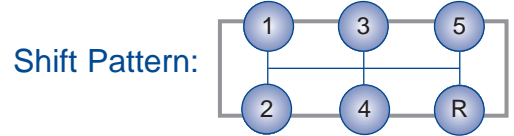
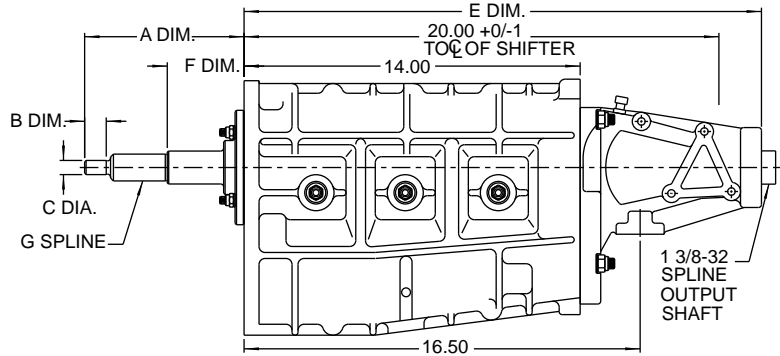
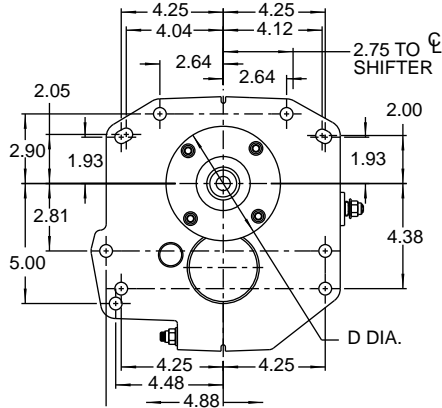


Richmond Street Five Speed

*Dimensions, Input Sets
& Selection Guide*

The Richmond Street Five Speed transmission delivers the ultimate blend of performance and economy. Utilization of four extra low gear ratios provide dramatic improvements in acceleration, while a 1:1 fifth gear allows maintenance of original fuel economy.



Mounting Specification Guide

Application	Part No.	A Dim.	B Dim.	C Dia.	D Dia.	E Dim.	F Dim.	G Spline
Ford	7041710	6.49*	1.14*	.668	4.849	24.00	3.83	1 1/8-26
Ford**	7041711	7.18	1.14	.668	4.849	24.00	4.37	1 1/8-10
GM	7021710	6.66	1.06	.590	4.683	21.57	3.22	1 1/8-26
GM	7021711	6.66	1.06	.590	4.683	21.57	3.22	1 1/8-10
GM Truck	7061710	6.66	1.06	.590	5.124	21.57	3.22	1 1/8-10
GM Truck	7061726	6.66	1.06	.590	5.124	21.57	3.22	1 1/8-26
Mopar	7031710	8.57	2.54	.748	4.807	24.00	4.28	1 3/16-18

* For small block engines. For big block, cut pilot (B Dim.) by .38

** '78 - '83 (5.0 L)

Center Distance	3.50 Inches
Oil Capacity	2 U.S Quarts
Approximate Dry Weight	95 lbs.
Case & Extension Housing	Aluminum
Controls	Side Lever

Input Sets

	22T/37T Input/Cluster
GM 1 1/8" 26 Spline	4521826 / 5551837
GM 1 1/8" 10 Spline	4521810 / 5551837
Ford 1 1/8" 26 Spline	4541826 / 5551837
Ford 1 1/8" 10 Spline	4541810 / 5551837
Mopar 1 3/16" 18 Spline	4531818 / 5551837

Transmission Ratio Selection Guide

Part No.	Description	1st	2nd	3rd	4th	5th	Rev.	Torque
7021710-A	GM 1 1/8-26 Spline	3.28	2.13	1.57	1.24	1.00	4.79	450 FP
7021711-A	GM 1 1/8-10 Spline	3.28	2.13	1.57	1.24	1.00	4.79	450 FP
7031710-A	Mopar 1 3/16-18 Spline	3.28	2.13	1.57	1.24	1.00	4.79	450 FP
7041710-A	Ford 1 1/8-26 Spline	3.28	2.13	1.57	1.24	1.00	4.79	450 FP
7041711-A	Ford 1 1/8-10 Spline	3.28	2.13	1.57	1.24	1.00	4.79	450 FP
7061726-A	GM Truck 1 1/8-26 Spline	3.28	2.13	1.57	1.24	1.00	4.79	450 FP
7061710-A	GM Truck 1 1/8-10 Spline	3.28	2.13	1.57	1.24	1.00	4.79	450 FP
Part No. - B		4.06	2.22	1.57	1.24	1.00	4.79	400 FP
Part No. - C		4.41	2.22	1.57	1.24	1.00	4.79	373 FP

Richmond Street Five Speed



- Continued -

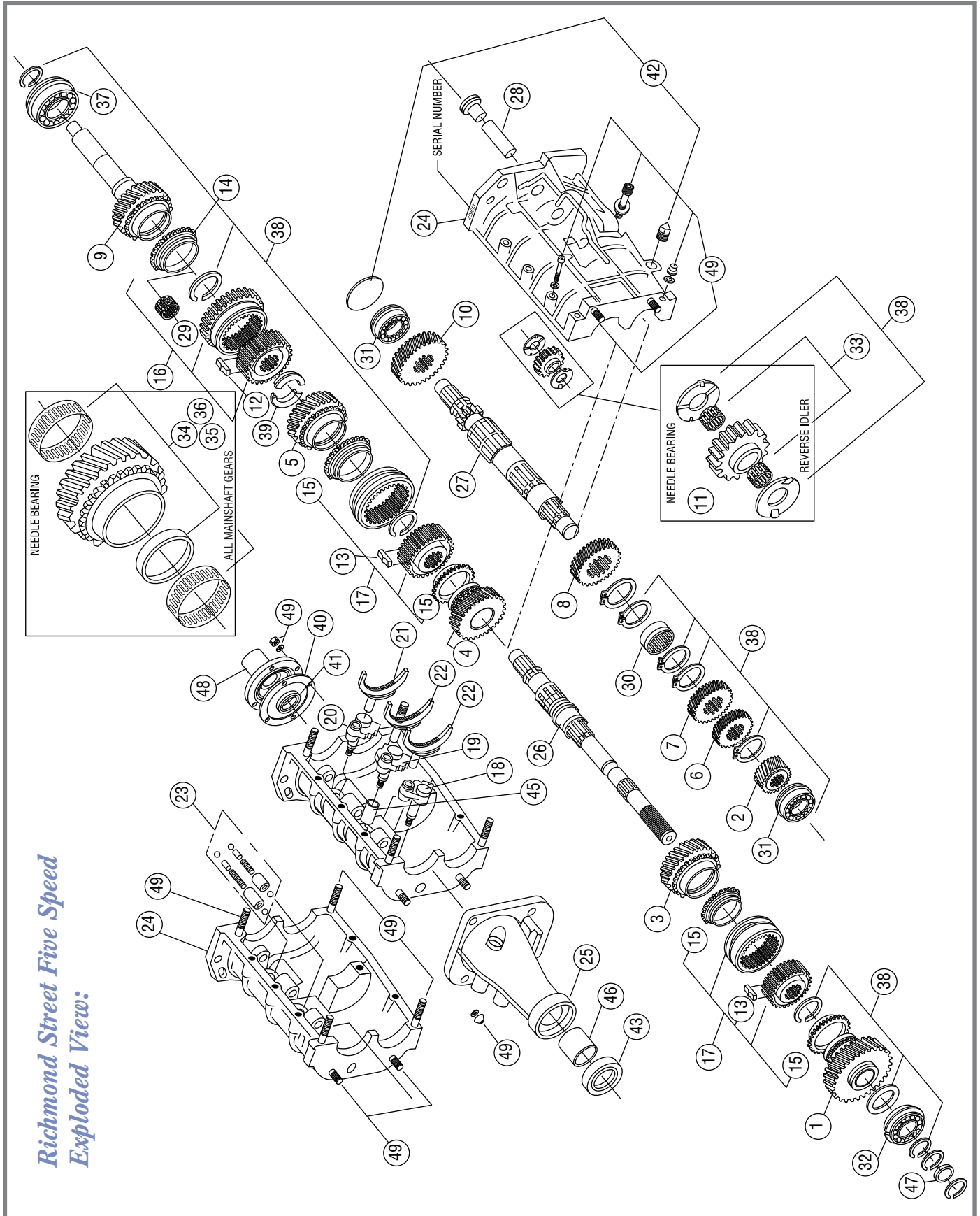
Replacement Parts

For view number see exploded view on page 27.

View #	Part No.	Description
1	1071839	1st Gear Mainshaft 3.28 A Ratio
	1071841	1st Gear Mainshaft 4.06 B Ratio
	1071842	1st Gear Mainshaft 4.41 C Ratio
2	1551820	1st Gear Cluster 3.28 A Ratio
	1551517	1st Gear Cluster 4.06 B Ratio
	1551516	1st Gear Cluster 4.41 C Ratio
3	2371833	2nd Gear Mainshaft
4	2371528	3rd Gear Mainshaft
5	2471825	4th Gear Mainshaft
6	2551525	2nd Gear Cluster B & C Ratio
	2551826	2nd Gear Cluster A Ratio
7	2551830	3rd Gear Cluster
8	2551834	4th Gear Cluster
9	4521826	Input 26 Spline GM
	4531818	Input 18 Spline Mopar
	4541826	Input 26 Spline Ford
	4541810	Input 10 Spline Ford 78-83
11	5271922	Rev. Idler Gear
10	5551837	5th Gear Cluster
12	6251500	Keys & Springs 5-REV
13	6291034	Keys & Springs 1-2-3-4
14	6451500	Synchro Brass 5-REV
15	1304091002	Synchro Brass 1-2 & 3-4
16	6571837	5-REV Synchro Assembly
16 Alt.	6591700	5-REV Synchro Assy-1 New Bullet Proof
17	6591510	Synchro Assembly 1-2-3-4
17 Alt.	6591600	Synchro Assy 1-2-3-4 New Bullet Proof
18	6692012	1-2 Shift Arm
19	6655034	3-4 Shift Arm
20	6691034	5-REV Shift Arm
21	6751550	Shift Fork 5-REV
22	1304096002	Shift Fork
23	6951500	Detent Kit
24	7158113	Main Case (2 Halves)
25	7221003	Extension Housing GM
	7241003	Extension Housing Ford & Mopar
26	7541532	Mainshaft Ford & Mopar

View #	Part No.	Description
26	7571532	Mainshaft GM
27	7651010	Cluster Shaft
28	7774115	Shaft Reverse Idler
29	7855112	Input ID Bearing
30	7855716	Center Cluster Bearing
31	7855306	Front or Rear Cluster Bearing
32	1000130010	Rear Output Bearing
33	7871030	Rev. Gear Bearing Assembly
34	7871052	2nd & 3rd Gear Bearing Assembly (Not Shown)
35	7871142	1st Gear Bearing Assembly (Not Shown)
36	7899442	4th Gear Bearing Assembly (Not Shown)
37	1000130010	Input Bearing
38	8051500	Small Parts Kit
39	8071400	Split Thrust Collar 4th Bearing
40	8195086	Bearing Retainer Gasket (All)
41	8225750	Input Seal, GM, Ford, Mopar
42	8251500	Case Plug Kit
43	8255132	Extension Housing Seal
44	T90A108	Shifting Arm Seals (3 req'd.) (Not Shown)
45	8358112	Shift Arm Bushings
46	1000127050	Extension Housing Bushing
	8380008	Extension Housing Bushing 9/85 & Newer
47	1304110002	Speedo Gear (All)
48	8624911	Front Bearing Retainer, GM
	8625920	Front Bearing Retainer, GM Truck
	8635307	Front Bearing Retainer, Mopar
	8644033	Front Bearing Retainer, Ford
	8644035	Front Bearing Retainer, Ford 78-83
49	9055500	Fastener Kit
	HN1000	Shifter (Long)
	HN1002	Shifter (Long) 82-90 "F" Body
	Sy-1310	Slip Yolk Turbo 400
	Sy-1310	Slip Yolk Turbo 400

Richmond Street Five Speed Exploded View



*Richmond Street Five Speed
Exploded View:*