

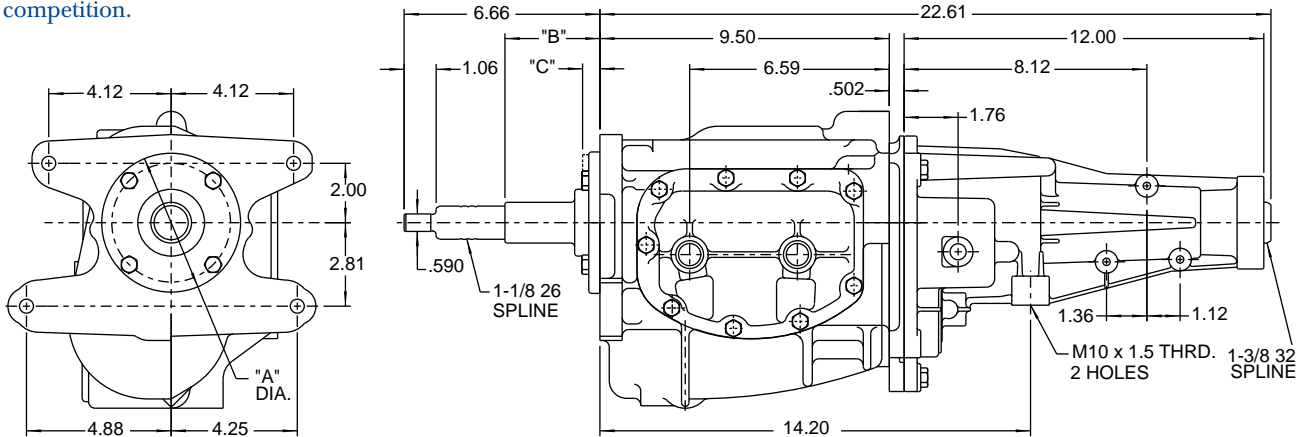
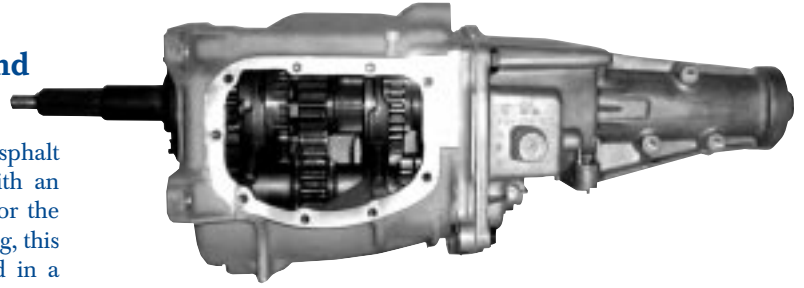
**NEW**

**Richmond Two Speed**

*Dimensions*

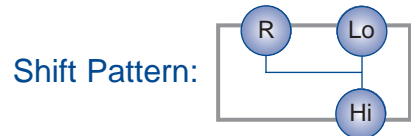
**Available in G.M. 1- $\frac{1}{8}$ -26 Input Spline and  
G.M. 1- $\frac{1}{8}$ -10 Input Spline.**

The Richmond Two Speed is designed for either dirt or asphalt racing where the rules stipulate an OEM transmission with an external clutch. The Two Speed utilizes straight cut gears for the ultimate in strength and durability. The best part is the shifting, this Two Speed uses Dog Rings for clutchless shifting. Offered in a variety of ratios, the two speed will let you get a "jump" on the competition.



**Special Features**

- Clutchless Shifting
- Straight Cut Gears
- Legal OEM Case
- Interchangeable Cluster



**General Specifications**

Part No.	Splines	Ratio A	Ratio B	Ratio C	Ratio D
7020010	10	1.03	1.12	1.23	1.34
7020026	26	1.03	1.12	1.23	1.34

<b>Center Distance</b>	3.25 Inches
<b>Oil Capacity</b>	2.4 U.S. Pints
<b>Approximate Dry Weight</b>	62 Lbs.
<b>Case &amp; Extension Housing</b>	Aluminum
<b>Controls</b>	Side Lever

